

FY-602 605 Data Radio configuration instructions

When many Data Radios work together at the same time, in order to avoid interference between each Data Radio, it is necessary to set different channel configuration for each pairs of Data Radios. But the Data radios which in the same group must use the same channel and air baud rate, different pairs of Data radio should set different configuration channel (available channel 1-16).

FY-602 Data Radio configuration instructions

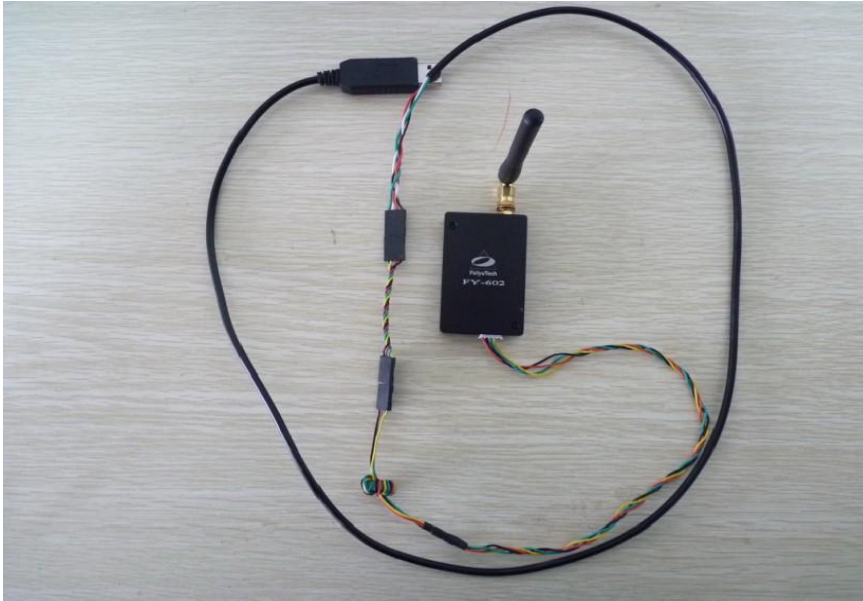
You need through USB-TTL data cable to connect Data Radio to your computer. Also you can connect it to “RF_Module_Soft.exe” change Data Radio parameters.

When you connect the Data radio to USB-TTL data cable, you need a 4P connecting wire like the picture below shows:



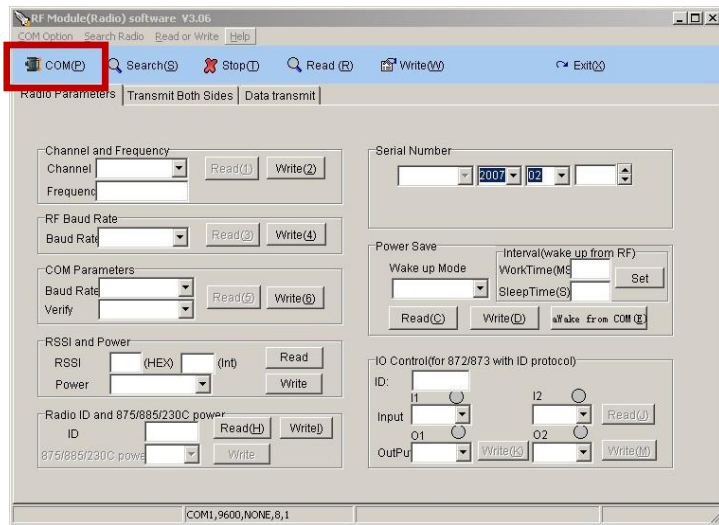
Connection must be pay attention to the polarity.



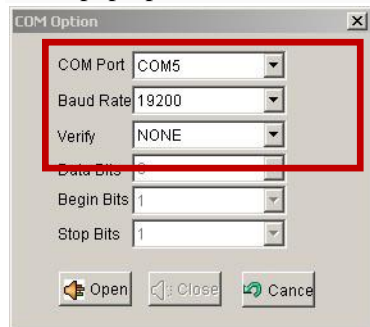


Because the Data Radio via USB-TTL data cable to power on, the Data Radio will immediately into work state when it power on, so the antenna should be installed before the USB-TTL data cable connected to the computer, in order to avoid Data Radio frequency power amplifier circuit part overheat and burn out.

After the wires connection is OK, USB-TTL data cable connected to the computer USB port, and through the "device manager" to confirm the current use of serial number, open the "RF_Module_Soft. Exe" software, click on "COM(P)":

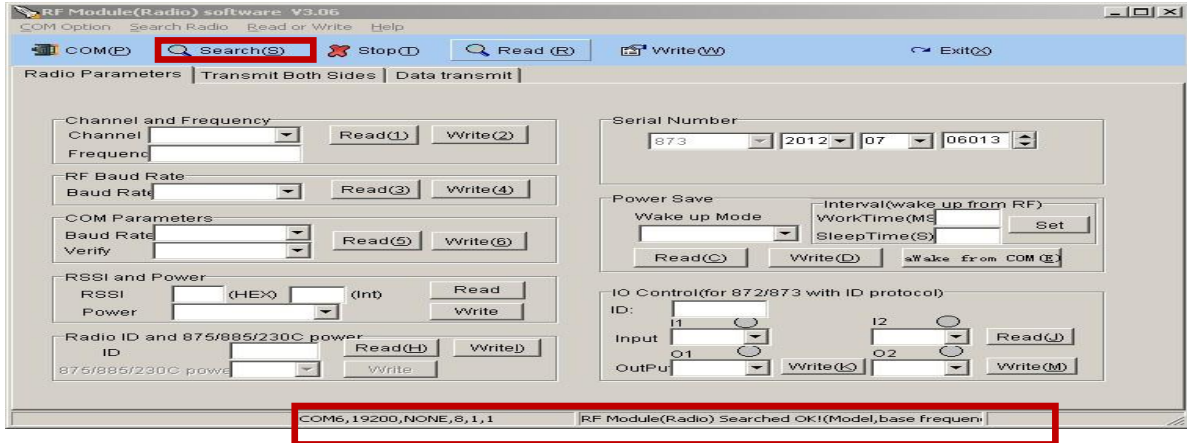


In the pop-up window, select the right COM and baud rate: 19200, like the picture below shows:

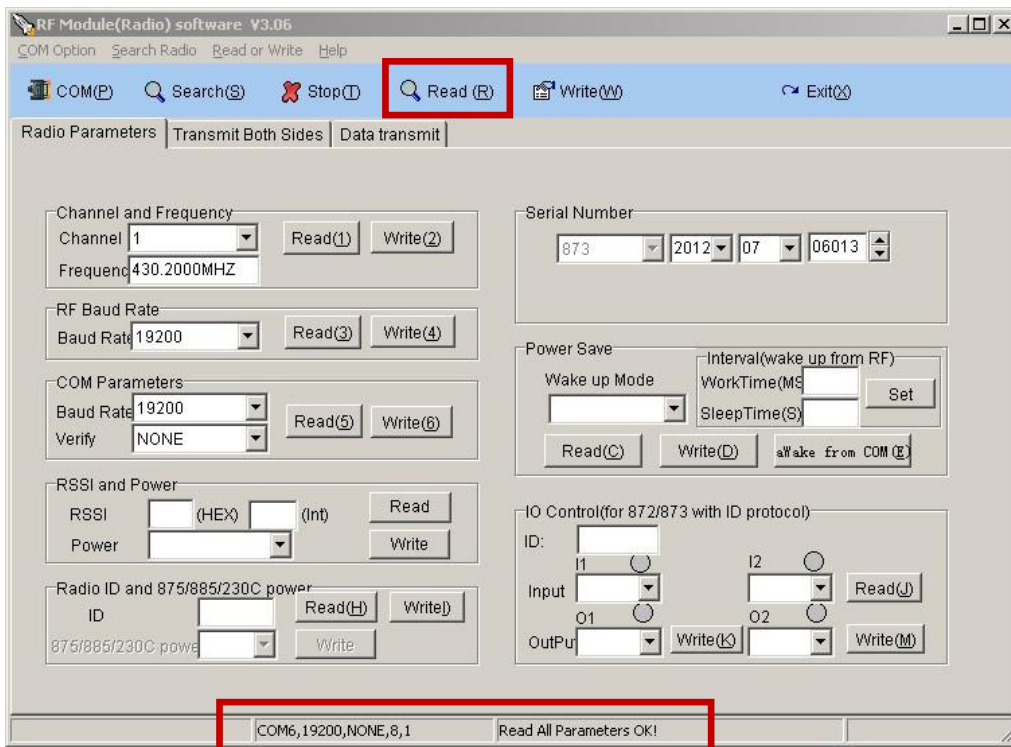


If serial open failed, please check the serial number is correct or not. If the serial number is correct, please re-plugged the USB-TTL data cable. When serial port is open, please click on the 'Search(S)

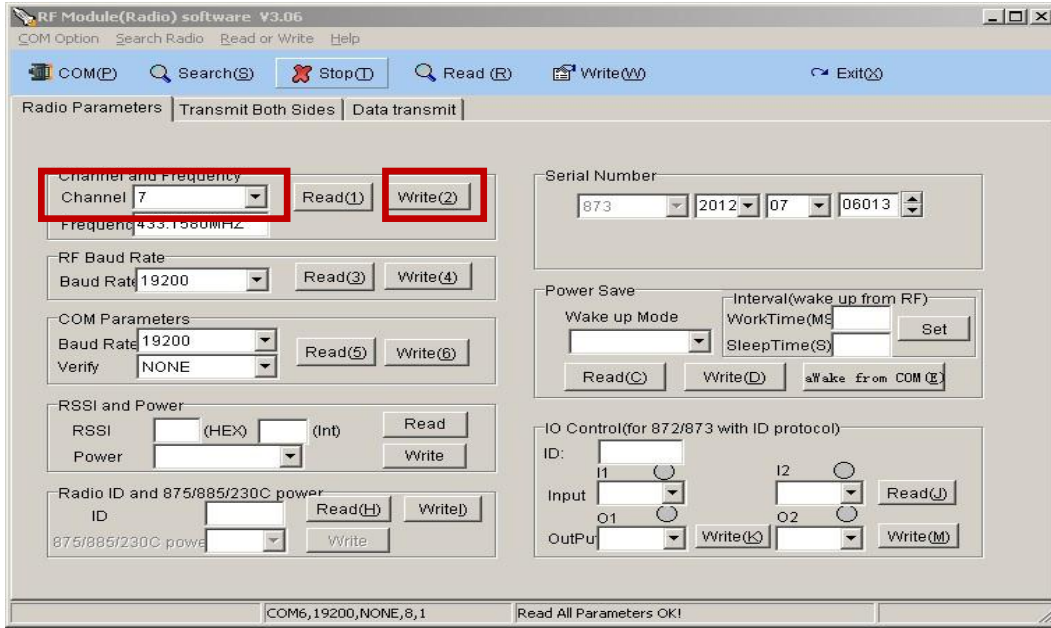
"When the software start to search the Data Radio, the data radio red LED will flash one time. If the red LED not flash one time or can't detect the Data Radio, please check the connection wires is right or not and USB -TTL data cable has poor contact or not. After search success, the status bar will have a corresponding hint:



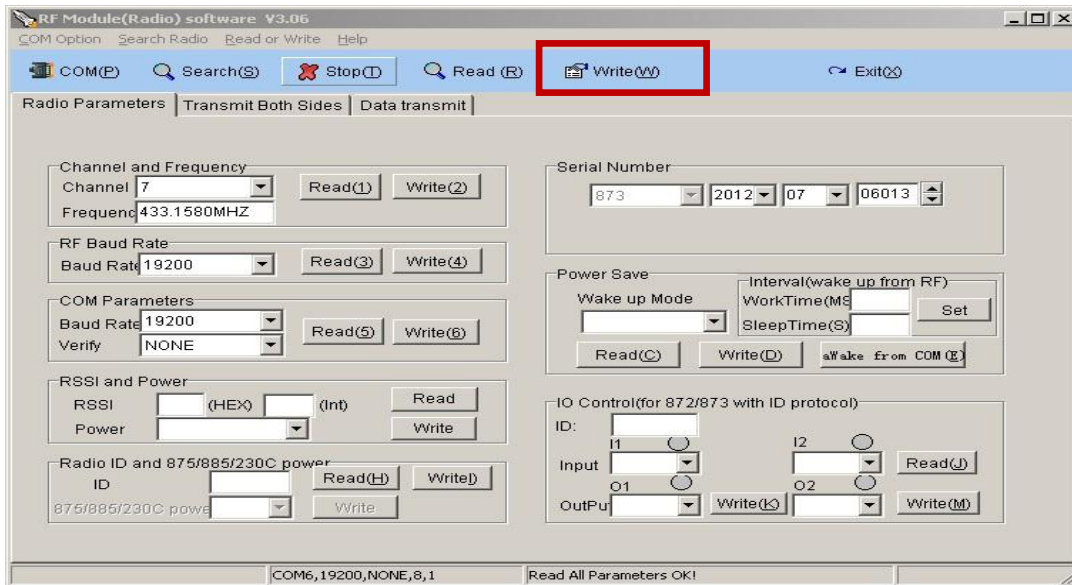
After detected the Data Radio, read the current various parameter values, you can choose "Read(R)" read all parameters, also you can click each item of the "read" readout parameters of this item:



After read the current parameters, now you can configure various parameters. In the channel drop-down menu to select the channel which you need to configure, click on the "Write(2)", underside column will indicate the parameter setting success. **The Data Radios in the same Group must have the same channel and air baud rate. If you use Feiyu flight control module, please do not modify the baud rate (Feiyu flight control module communication baud rate is 19200), if you use other flight control module then you can change it to the corresponding baud rate.**

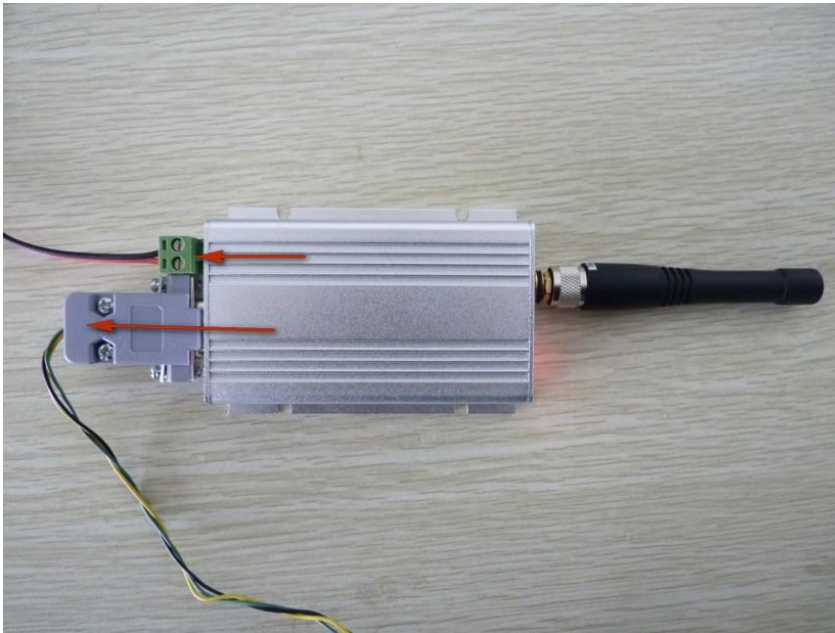


After configuration is "OK", please save the parameters to the Data Radio, otherwise the parameters will back to before after power off. Click on the "Write(W)", the software will save the parameters to the data radio, please re-detected again and read the current parameters, if the parameters is the setting parameters, then the parameters have fully configured and saved into the data radio success:



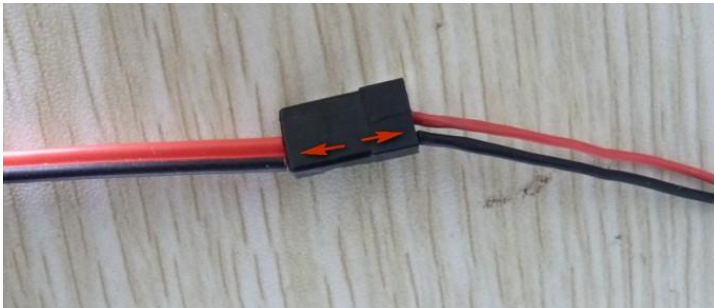
FY-605 Data Radio configuration instructions

FY-605 use independent power supply work mode, 2 pin interface for power supply(5v power supply, do not connect high voltage), and 3 pin interface for the data port (the interface power cable not connected, so USB-TTL data cable don't need to pull out the red power cord) :



Like FY-602, the Data Radio will immediately into work state when it power on, so the antenna should be installed before power on, in order to avoid Data Radio frequency power amplifier circuit part overheat and burn out.

Connection must be pay attention to the polarity:



When you connect the Data radio to USB-TTL data cable, you need a 4P connecting wire like the picture below shows:



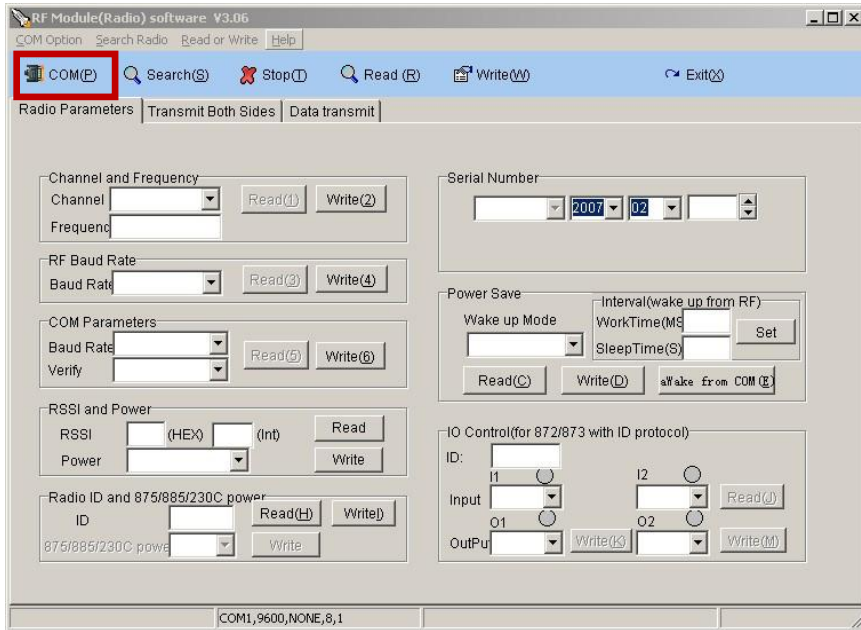
Connection must be pay attention to the polarity:



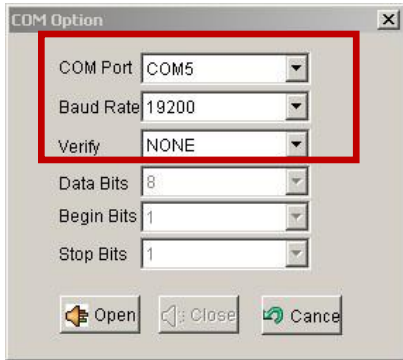
When you power on the Data Radio, the data radio data state LED will flash one time, and power state LED will stay on solid, like the picture below, the LED which is near the antenna is data state LED, and the one that stays on solid is power state LED:



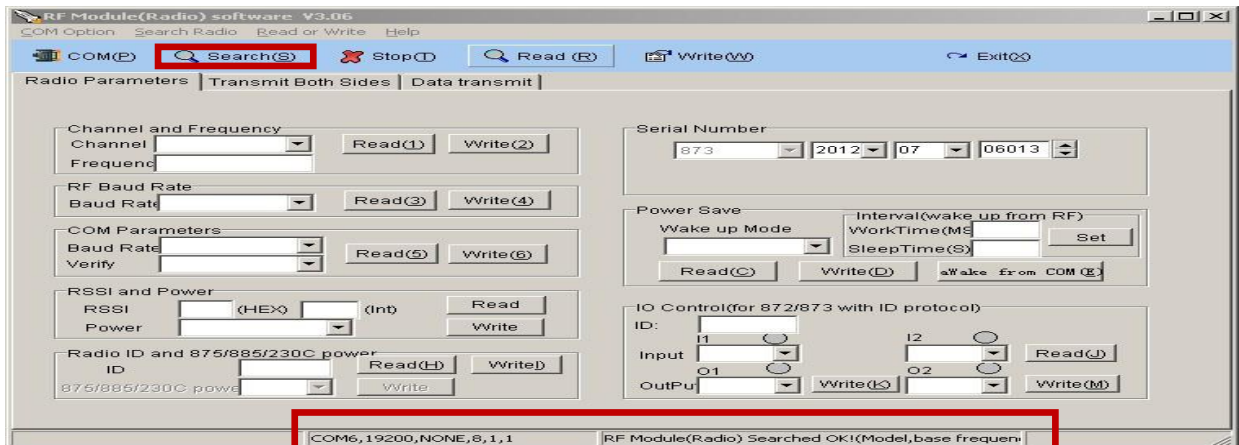
After the wire connection is OK, a USB-TTL data cable is connected to the computer USB port, and through the "device manager" to confirm the current use of serial number, open the "RF_Module_Soft.Exe" software, click on "COM(P)":



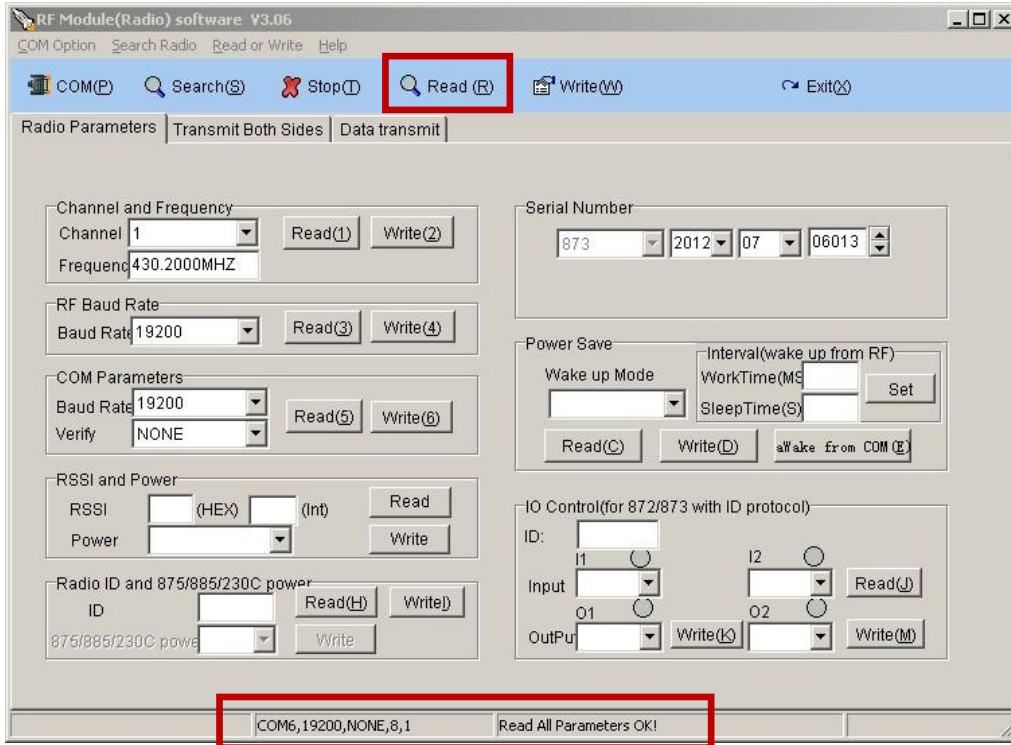
In the pop-up window, select the right COM and baud rate: 19200, like the picture below shows:



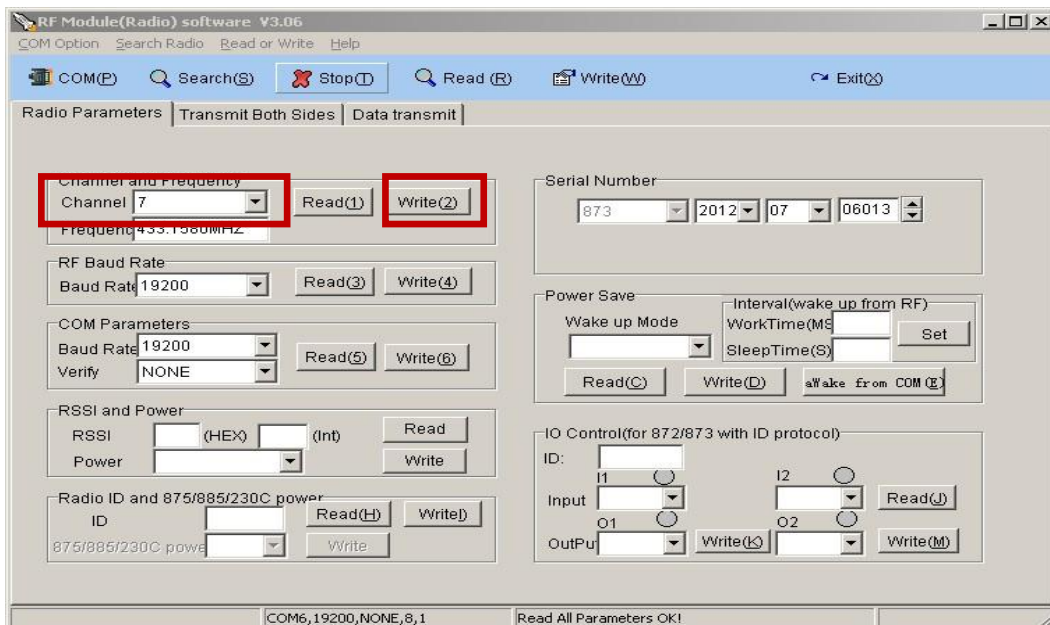
If serial open failed, please check the serial number is correct or not. If the serial number is correct, please re-plugged the USB-TTL data cable. When serial port is open, please click on the 'Search(S)'. When the software start to search the data radio, the data radio red LED will flash one time. If the red LED not flash one time or can't detect the data radio, please check the connection wires is right or not and USB-TTL data cable has poor contact or not. After search success, the status bar will have a corresponding hint:



After detected the Data Radio, read the current various parameter values, you can choose "Read(R)" read all parameters, also you can click each item of the "read" readout parameters of this item:

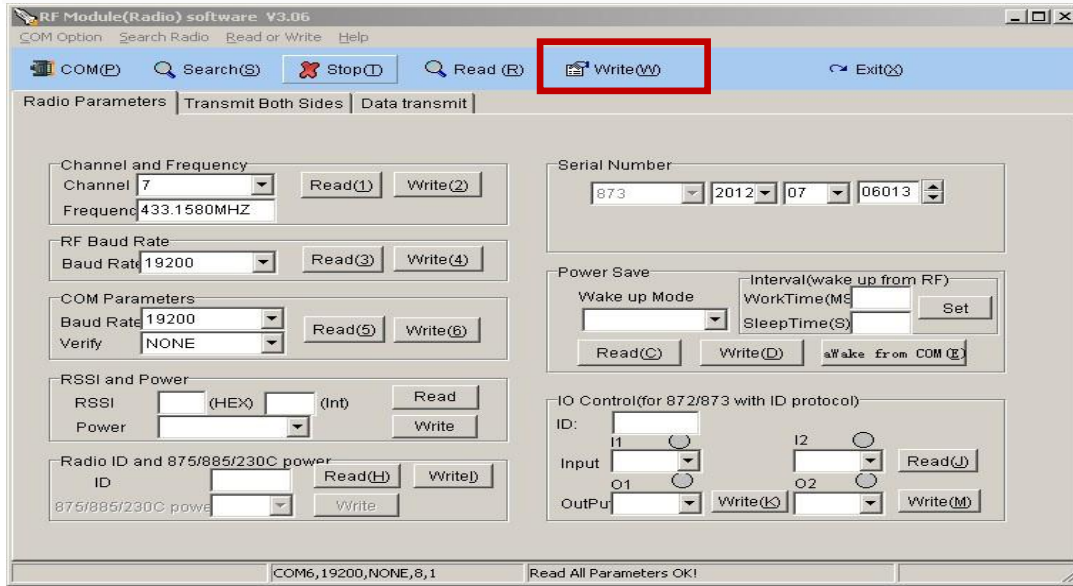


After read the current parameters, now you can configure various parameters. In the channel drop-down menu to select the channel which you need to configure, click on the "Write(2)", underside column will indicate the parameter setting success. **The Data Radios in the same Group must have the same channel and air baud rate. If you use Feiyu flight control module, please do not modify the baud rate (Feiyu flight control module communication baud rate is 19200), if you use other flight control module then you can change it to the corresponding baud rate.**



After configuration is "OK", please save the parameters to the Data Radio, otherwise the parameters will back to before after power off. Click on the "Write(W)", the software will save the parameters to the Data Radio, please re-detected again and read the current parameters, if the parameters

is the setting parameters, then the parameters have fully configured and saved into the Data Radio success:



Announcements:

- 1: FY-602 and FY-605 connection method of configuration parameters is different, please read carefully the corresponding Data Radio wires connection mode.
- 2: The antenna should be installed before power on.
- 3: You need power on FY-605 with +5V battery.
- 4: The Data Radios in the same Group must have the same channel and air baud rate. If you use Feiyu flight control module, please do not modify the baud rate (Feiyu flight control module communication baud rate is 19200).

----END---

Note: We reserve the right to change this manual at any time! And the newest edition will be shown on our website www.feiyudz.cn.